



---

**verbierfestival**  
orchestras

## VERBIER FESTIVAL ORCHESTRA 2024

### BASS TROMBONE EXCERPTS

- Sarabande from Bach Cello Suite No. 5, Without Repeats (Yeo Transcription)
- Wagner: Die Walküre, Act III – “The Ride of The Valkyries” (As Marked)
- Wagner: Overture to Tannhäuser – Reh. Letter A for seventeen Measures
- Wagner: Das Rheingold, Scene 4 – “Entrance of the Gods into Valhalla” (As Marked)
- Schumann: Symphony No. 3, Mvt IV – Beginning to 13 Bars after Reh A
- Mozart: Requiem, K. 626 – “Kyrie” – 7 bars before Reh. Letter F to End

All orchestral excerpts are available on the following pages of this document.

### GUIDELINES

- All applicants MUST read the Application Guidelines published at <https://app.getacceptd.com/verbierfestival> before starting an application or creating an audition video.
- The tuning pitch of the Verbier Festival Orchestra is A=442 Hz.
- All auditions are unaccompanied, and therefore no piano should be used.

SARABANDE FROM BACH CELLO SUITE NO. 5, WITHOUT REPEATS (YEO TRANSCRIPTION)

**J. S. Bach**  
*Cello Suite 5, BWV 1011: Sarabande*  
Performing edition for trombone by  
**Douglas Yeo**

Sarabande ♩ = 48

1 *p*

5

9 *poco cresc....* *dim.....*

13 *pull back*

17 *poco a poco dim to end* *rit.*

✱  
(Climax!)

WAGNER: OVERTURE TO TANNHÄUSER – REH. LETTER A FOR SEVENTEEN MEASURES

Andante maestoso. (♩ = 50)  
10 \*Fag. II. 20 A

pp

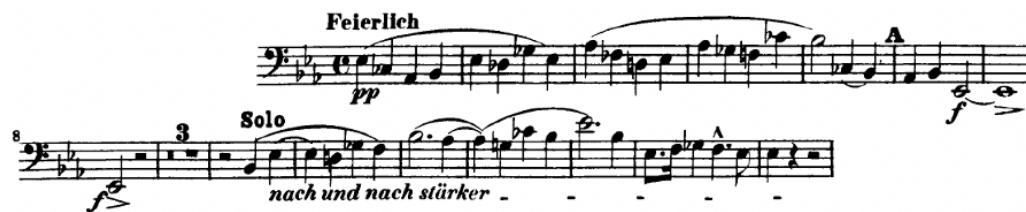
ff

f

WAGNER: DAS RHEINGOLD, SCENE 4 – “ENTRANCE OF THE GODS INTO VALHALLA” (AS MARKED)



SCHUMANN: SYMPHONY NO. 3, MVT IV – BEGINNING TO 13 BARS AFTER REH A





MOZART: REQUIEM, K. 626 – “KYRIE” – 7 BARS BEFORE REH. LETTER F TO END

The image displays a musical score for the Kyrie section of Mozart's Requiem, K. 626. The score is written for a single melodic line in bass clef, with a key signature of one flat (B-flat). The tempo is marked "Allegro." at the beginning. The score consists of 10 staves of music. The first staff begins with a first ending bracket labeled "1" and a fermata. The second staff starts with a forte dynamic marking "f". Various letter markings (F, G, H, I, K, L, M, N) are placed above specific notes or measures throughout the score. The final staff concludes with the tempo marking "Adagio." and a fermata. The score ends with a double bar line.